

SAFETY & INDUSTRY STANDARDS COMPLIANCE

Navigate with confidence through the complexities of technical documentation and compliance, adhering to industry standards set by ASME and API. Expand your global reach with our IECEx consultation services, ensuring compliance and safety in hazardous environments. Our comprehensive services ensure meticulous attention to detail and seamless adherence to regulations, guiding you through the regulatory landscape with expertise and precision, so you can focus on your success.

Flanges and Fittings
(ASME, API)

Valves (ASME, API)

Pressure Vessels (ASME)

Piping Systems (ASME, API)

IECEx Test Report
(ExTR)

IECEx Certificate of
Conformity (CoC)

IECEx Scheme for
Explosive Atmospheres

IECEx Quality Assessment
Report (QAR)

CONTACT US

+966 54 2862009

Office 2245, KRTP HQ Building
KAUST, Saudi Arabia

www.saherflow.com

contact@saherflow.com



scan me

SEE THE UNSEEN WITH OUR IN-HOUSE X-RAY IMAGING SERVICES



Experience the precision and versatility of our cutting-edge in-house X-ray imaging services. Our advanced imaging capabilities offer unparalleled insights for a wide range of applications, including quality control, research and development, and non-destructive testing. Our high-resolution results ensure accuracy and reliability, providing meticulous attention to detail. Unlock new possibilities and elevate your operations with our expert X-ray imaging. We offer full integration of x-ray systems in your products, meeting your portability requirements.



Expert Consultancy for the Right Solutions

Our flow metering experts can help you choose the right type of flow meter for your application such as Coriolis, turbine, magmeter or clamp-on ultrasonic flow meter. These flow meters find application in various industries such as water treatment, food, energy and chemicals etc



Choosing the right solutions for your specific application can be challenging. Our expert consultancy services are here to guide you in selecting the most suitable products, ensuring optimal performance and accuracy.

SAHER ENGINEERING SERVICES

Turnkey solution provider for your research and engineering needs

ONE STOP SOLUTION TO MAKE YOUR PRODUCT STAND OUT

ELECTRONICS

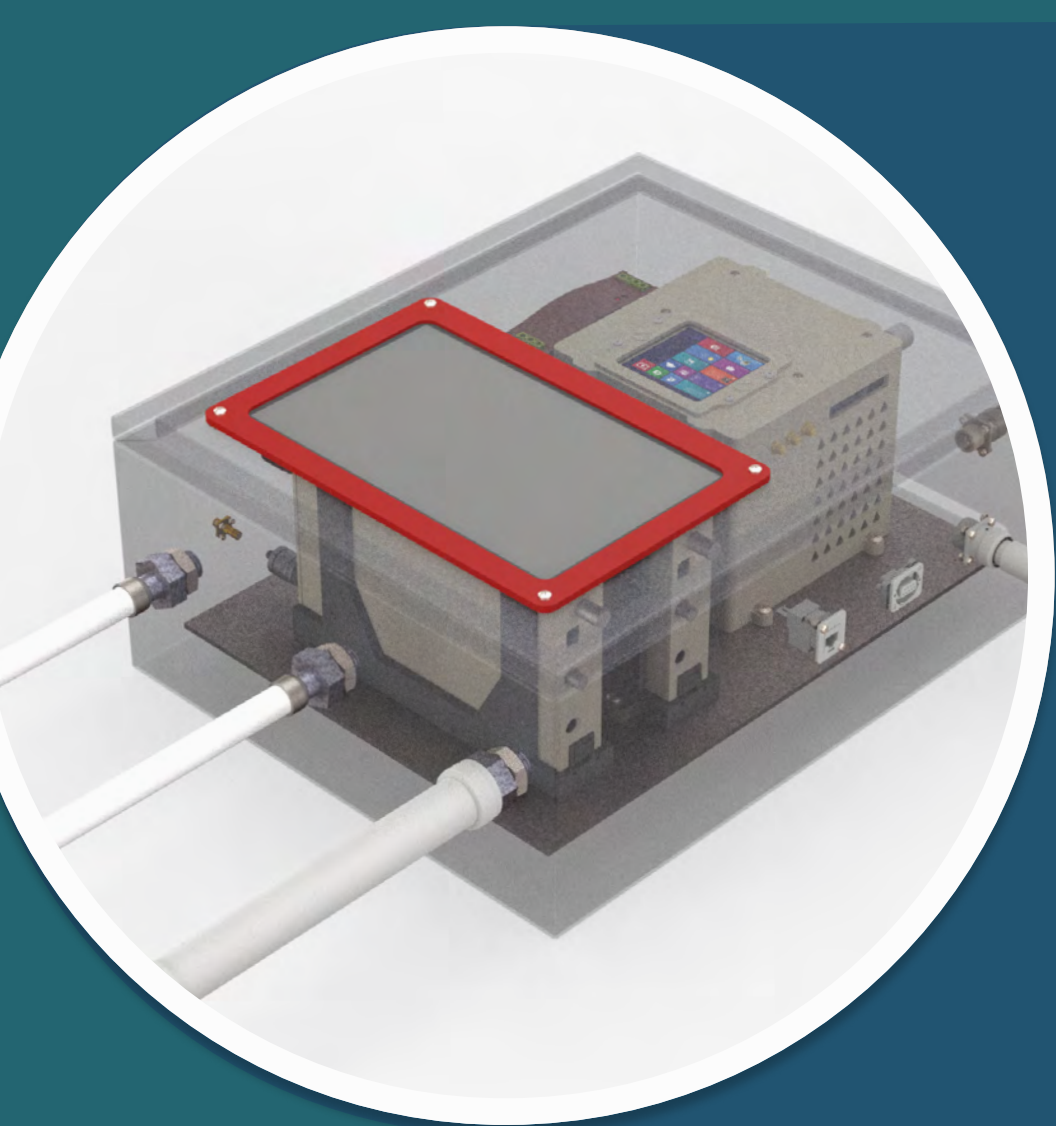
SOFTWARE

MECHANICS

PRODUCT ENGINEERING

PRODUCT DESIGN

Elevate your vision with our Product Design Service! Our expert team turns ideas into market-ready products using creativity and cuttingedge technology. Let's design your success story together!



Empowering innovation from the inside out

Our team has the expertise to design all sort of electronics boxes (IECEX/ATEX/CSA certified) to be used in hazardous and classified zones. Control all the needs of your electronic products from a custom compact-sized electronics box.



Ultimate portability

We have history of delivering skid-mounted intelligent flow computing products - compatible with forklifts and easy to move in all kinds of terrains. Our experience with compact skid designs, ensures portability of your equipment.



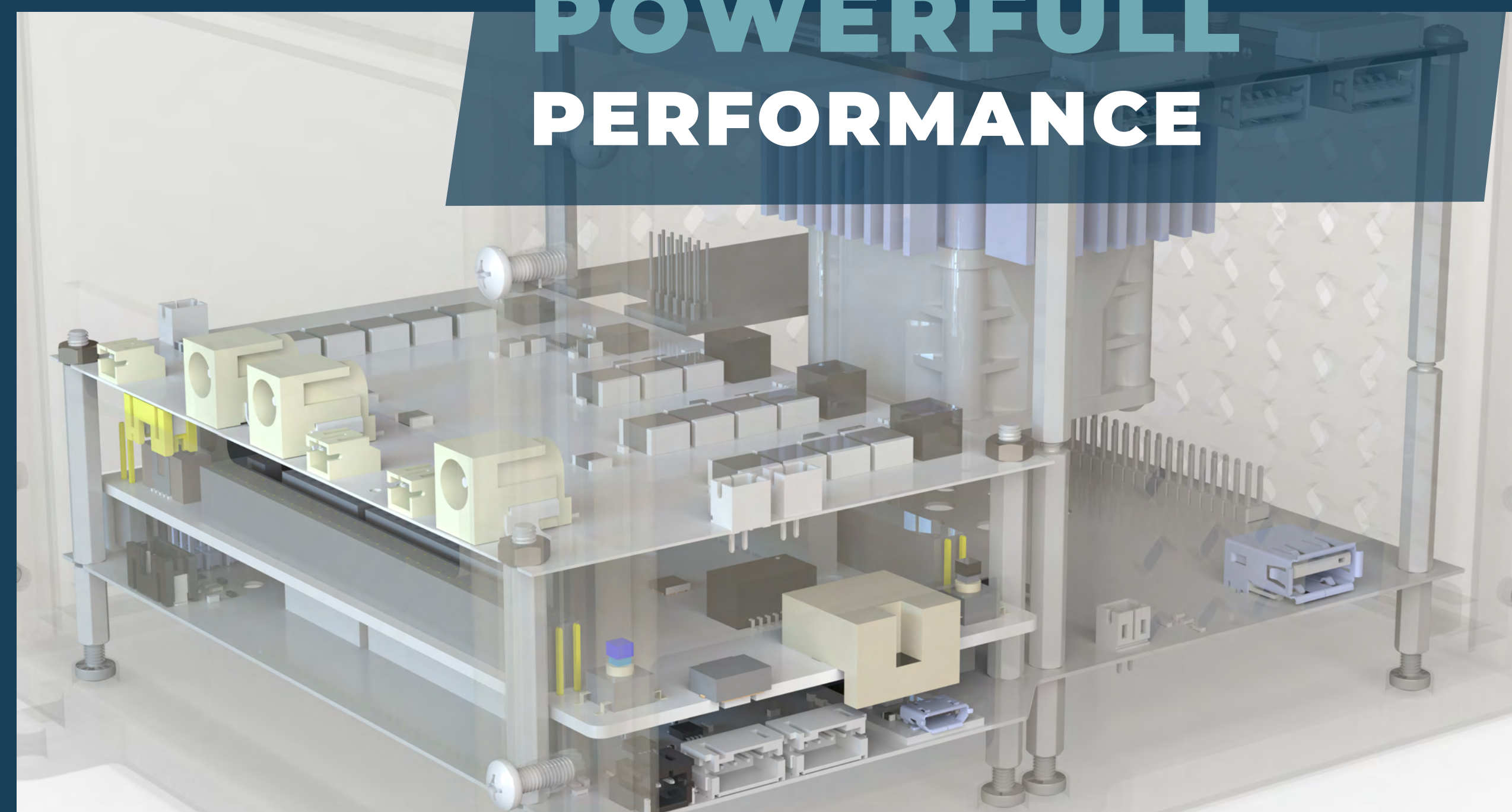
Engineering excellence in action

With decades long experience in NDT, microwaves and X-rays, you can rely on us to engineer the optimum solution to your needs.

SOFTWARE & EMBEDDED SYSTEM

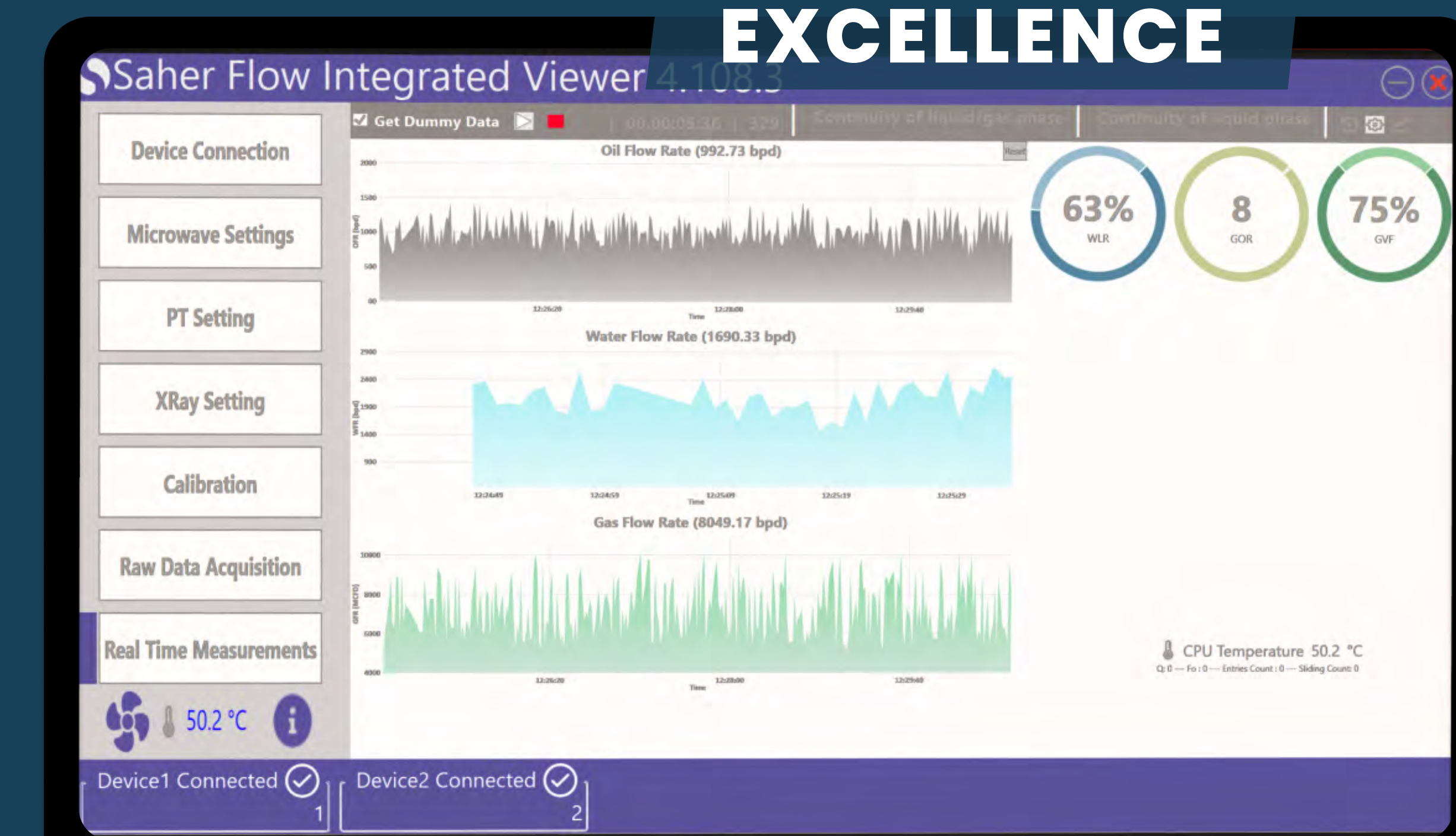
Smart edge computing systems, designed by our engineers, deliver high-end performance in the extreme demanding conditions.

INTUITIVE INTERFACE POWERFULL PERFORMANCE



The are the experts in designing flow computer systems by integrating data from a variety of sensors and instruments. Our engineers are experienced with developing AI windows based applications with a range of options such as data display, logging, calibration and feedback control.

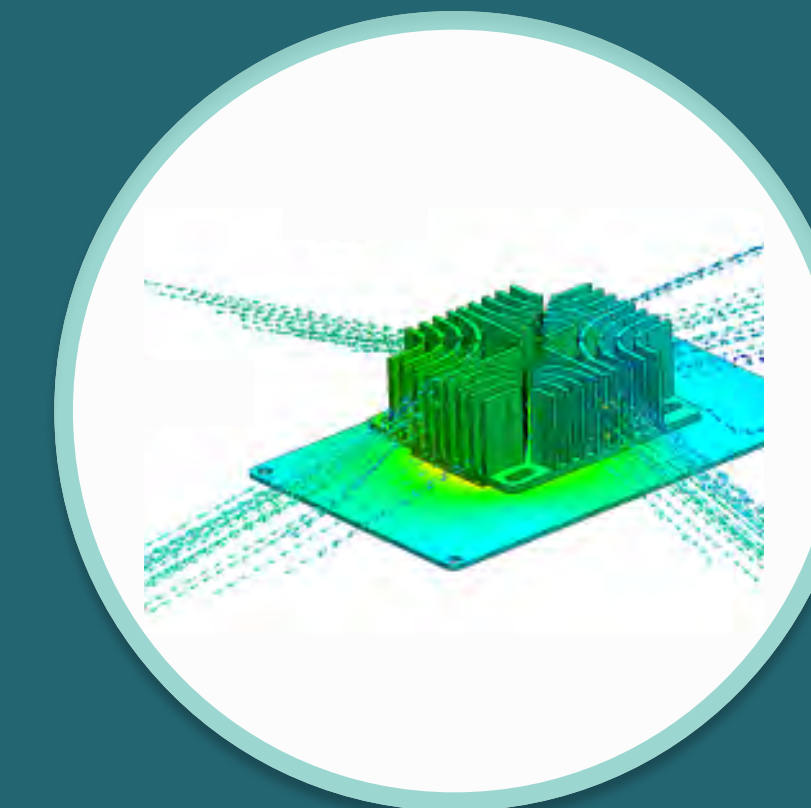
ENGINEERED FOR EXCELLENCE



Design Validation

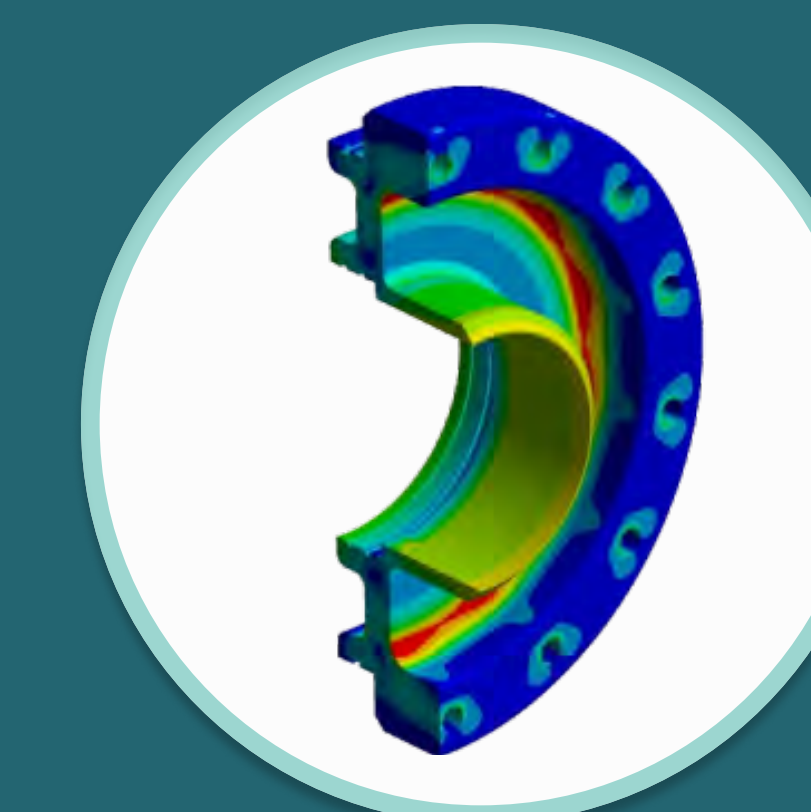
We ensure your product meets top standards through advanced analysis. Trust us for reliable validation and peace of mind.

EFFICIENT THERMAL MANEGEMENT UNVEILED



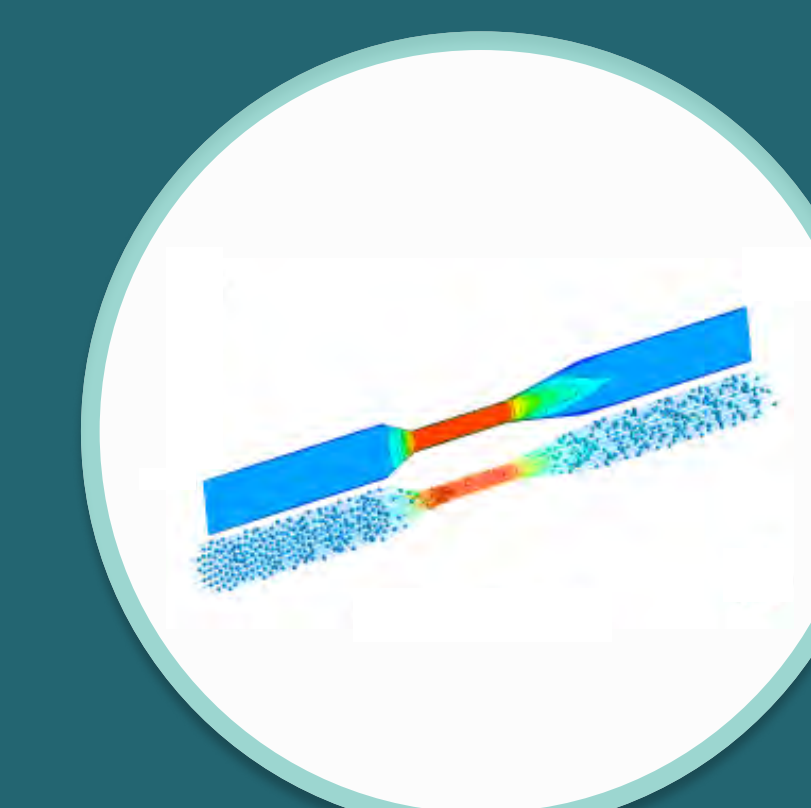
Detailed thermal flow analysis enable us to design custom heat management systems for PCBs and enclosures which are meant to work in harsh outdoor conditions.

UNLEASHING PERFORMANCE PEAK



Stress analysis ensures unmatched durability while using minimum possible material and achieving lightest possible weight.

UNVEILING PRECISION



Our CFD analysis group can perform critical detailed flow analysis, ensuring top-tier performance in our Design Validation Service.

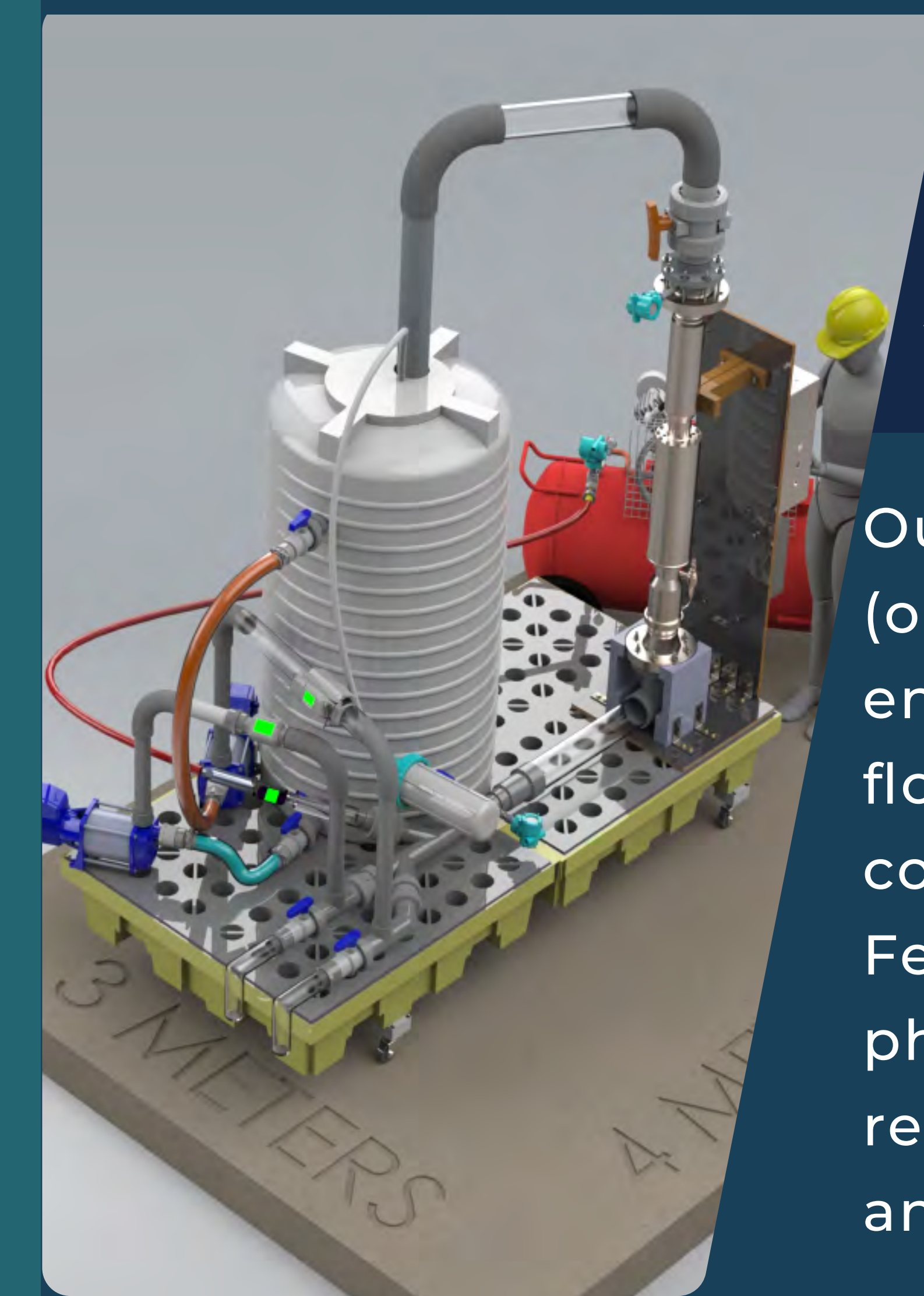
Excellence in innovation

Our skid-mounted Multiphase Flow Meter and electronic box showcase the results of our Prototyping and Testing Service



Prototyping & Testing

From concept to reality, our Prototyping and Testing Service brings your vision to life. With precision engineering and rigorous testing, we turn ideas into tangible prototypes, ensuring they meet the highest standards of quality and performance. Trust us to prototype and test your innovations with expertise and efficiency.



Real-world validation

Our in-house Multiphase (oil, water & gas) flow loop enables testing of various flow technologies in a controlled environment. Feedback control of each phase, gives control required for calibration and accurate test results.